



Earl of Northampton's Charity

Est 1614



**Trinity Hospital
Highbridge, Greenwich
London
SE10 9PS**

Earl of Northampton's Charity registered charity number 210291
Trustee: The Mercers' Company, Mercers' Hall, Ironmonger Lane, London
EC2V 8H
Telephone: 020 7726 4991



The Earl of Northampton's Charity has provided sheltered accommodation in its almshouse in Greenwich since 1614. The accommodation is for elderly local people who must have lived in the London Borough of Greenwich for 4 years prior to their appointment. The original almshouse is the oldest dwelling in Greenwich. The Trustee of the charity, the Mercers' Company, completed a second building of thirty one flats in the almshouse grounds in 2007 (see cover) and intends to refurbish the original building.

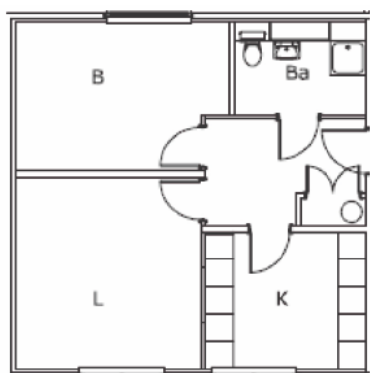
The almshouses are set in lovely grounds (right), located in the historic centre of Greenwich with good local amenities and excellent public transport links. The new building has specific sheltered facilities including lifts to all floors, a resident warden,



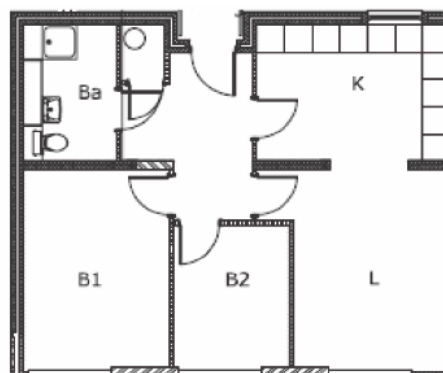
CCTV linked door entry and 24 hour warden control. The original building will have similar facilities on completion of the refurbishment.

Accommodation in the New Building

The new accommodation provides 8 one-bedroom and 23 two bedroom flats.



One Bedroom Flat



Two Bedroom Flat



Kitchens are modern with easily accessible units and special taps for ease of use and under unit lighting.

Bathrooms have walk in showers with seats, emergency pull cords and heated towel rails and fitted cabinets.



The **sitting rooms** are light and airy with views across the gardens.

There is a generous **communal space** including a large lounge for residents' use with a bar/library area. An adjacent room provides space for arts and craft activities, exercise classes and larger functions. There is also a fully equipped **IT** suite. A kitchen is available and can be used for more formal occasions.

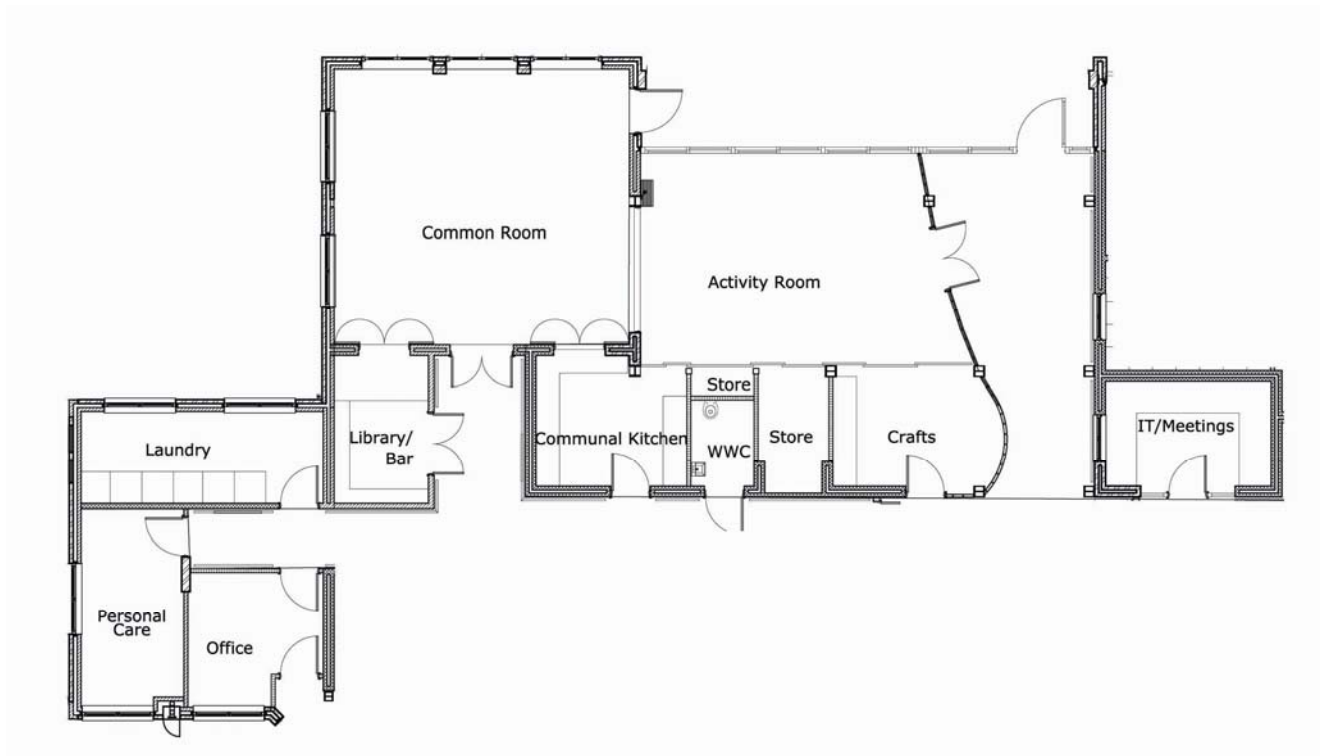
There is also a fully equipped bathroom for assisted use and a launderette with washing machines and tumbledryers.



A number of regular activities are planned, including a weekly lunch club and regular visits by a hairdresser, chiropodist and other wellbeing services.

The community amenities are all grouped on the ground floor with easy access by lift from the upper floors. There is also direct access to the garden and an attractive verandah with outdoor seating areas overlooking the garden.

Plan of Communal Area



The Chapel

There is a Chapel in the original almshouse where services are held each Thursday to which all residents are welcome. The Chaplain is the Vicar of St Alfege Church, Greenwich. During the refurbishment services will be held in the new building.



Charges

There is a weekly maintenance charge which is equivalent to rent. This will be set at affordable levels. Many residents will be eligible for housing benefit which will cover all or part of the weekly charge. The charity's welfare officer will be able to give guidance and advice. The charges will be reviewed annually. The current charges are as follows:

One-bedroom flat - **£105** per week

Two-bedroom flat - **£117.40** per week

Two-bedroom flat with roof garden - **£140** per week.

How to Apply

1) Do you qualify?

The almshouse provides sheltered accommodation and applicants should be age 60 or over, on low incomes and must have lived in Greenwich for at least 4 years.

2) Who should you contact?

All appointments must be approved by the Trustee as required by the Charity Commission. To apply, contact the following:

The Housing Co-ordinator
The Mercers' Company
Mercers' Hall
Ironmonger Lane
London EC2V 8HE

Telephone: 020 7776 7272

E-mail: saraho@mercercs.co.uk

You may also wish to speak to the Warden whose details are below:

The Warden
Trinity Hospital Greenwich
Highbridge
Greenwich
London SE10 9PS

Telephone: 020 8858 3185

3) Nominations

The Trustee works closely with the London Borough of Greenwich Supported Housing Adult and Elderly People Services and accepts a number of nominations from them. For further information contact the Council direct.

4) What is the process?

If you qualify you will be asked to complete an application form and you will join a waiting list. If you are shortlisted:

- A member of staff will visit you in your home as part of the assessment.
- You will be invited to a meeting at the almshouse where you will also view the accommodation.
- A further interview must be held with some of the Trustees before you can be appointed.

Local Transport

There is an excellent bus service from Old Woolwich Road. Trains from Maze Hill station (10 mins walk) run to London Bridge, Charing Cross and Cannon Street stations. The Cutty Sark DLR station is also a 10 minute walk away.

Map of area

